

## iMINI USB pdf



- Plug & Play single use data logger
- No special software; automatically opens as a PDF
- Preprogrammed to customer's specification
- Compact profile; weighs less than 14g
- Contained in waterproof pouch
- Large memory capacity; 7928 readings
- Five LEDs provide instant status

## Features

The iMINI USB pdf single trip data logger generates a comprehensive PDF report without the need for proprietary software or interface. It comes pre-programmed; just press the start button and go. It is data logging made easy.



## Four Alarm Thresholds



Now with expanded alarm thresholds, the user will be able to see a warning of temperature variances using the low and high settings as well as catastrophic levels with low low and high high settings, ensuring safe transport of perishable cargo.

Certifications:



**NIST  
Traceable**

## Specifications

Description	Specifications
Product Code	MS-ST-S-8
Memory Options	8K, 7928 readings
Program Interval	5 seconds to 17 hours
Time Accuracy	±1 hour per year
Sensors	Internal
Temperature Range	-40 °C to +80 °C (-40 °F to +176 °F)
Temperature Accuracy	±0.5 °C (-40 °C to -10 °C), ±1 °F (-40 °F to +14 °F); ±0.3 °C (-10 °C to +80 °C), ±0.6 °F (+14 °F to +176 °F)
Resolution	0.1 °C (0.1 °F)
Sensor Response Time	T90 of 5 minutes in moving air
LCD Operating Range	N/A
Alarm Thresholds	4 thresholds; 2 Red LEDs, 2 Blue LEDs
Alarm Configuration	HIGH HIGH, HIGH, LOW & LOW LOW
Bookmark	Yes, maximum 8
Preprogram Option	Factory programmed
Start Option	Push button and/or timer
Auto Restart	N/A
Start Delay	Yes, 1 minute to 99 days
Stop Option	Yes, stop button (can be disabled) or timer
Size	68mmx37mmx5mm (without sleeve) 81mmx52mmx5mm (with sleeve)
Weight	14 g
Case Material	Plastic sleeve
Battery	3.0V
IP Rating	IP 65
Warranty	1 Trip
Calibration	3 point NIST traceable calibration (optional)
Accuracy Certificate	Upon request
Other Certification	ISO9001:2008, CE, RoHS
Shelf Life	1 Year
Interface	USB
Software	Console Plus
Default File Format	PDF & CVT
Data Export	TXT, CSV & CVT
Security	N/A

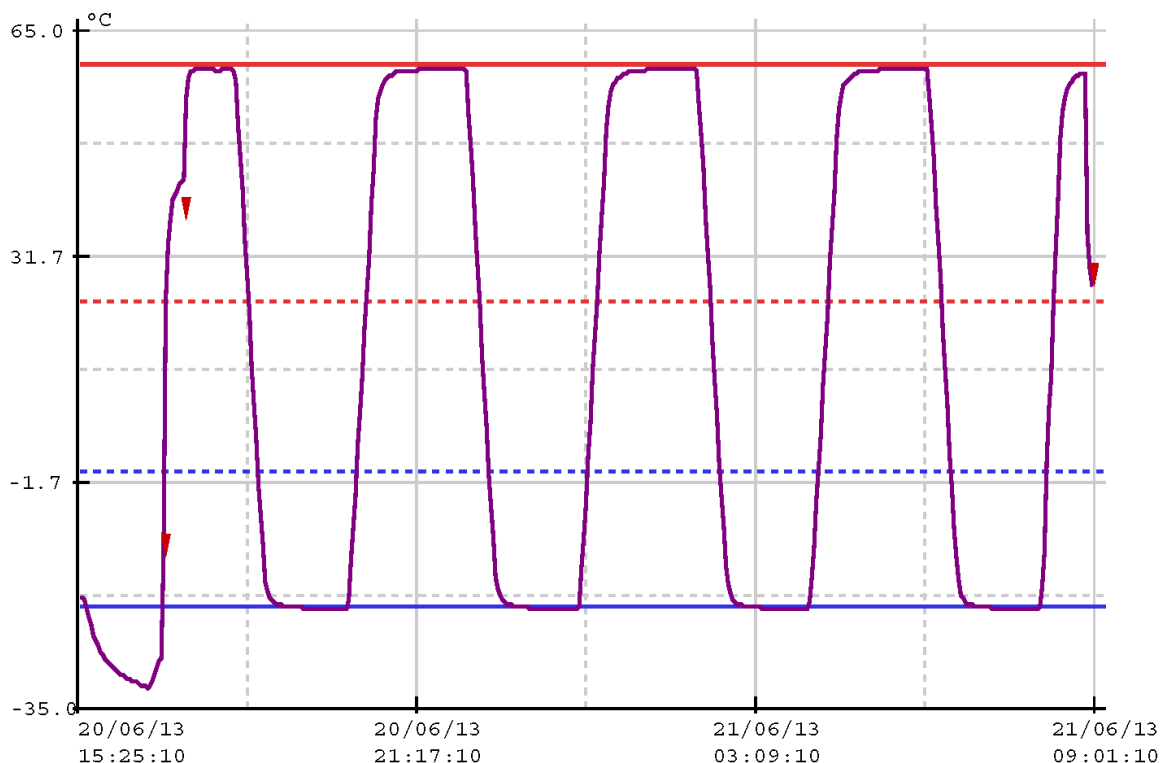


MS-CD-171-0999  
09:01:59 21/06/2013

### Device specification

Product code	MS-ST-S-8
Serial Number	MS-CD-171-0999
H/W Version	Ver_1_37A
Trip Remaining	No
Description	Cryopak Ver Tech
Battery	51%
Original time zone	UTC: -5
Start	20/06/2013 15:25:10
Finish	21/06/2013 09:01:10
Start Delay	15m
Interval	60s
Readings	1057
Temperature Range	-40 to +80 °C
High High Alarm	60.0 °C
High Alarm	25.0 °C
Low Alarm	0.0 °C
Low Low Alarm	-20.0 °C

### Record





MS-CD-171-0999  
09:01:59 21/06/2013

### Statistics

Highest	59.6 °C
Average	15.5 °C
Lowest	-31.7 °C
High High Alarm	Enabled
High Alarm	Activated
Low Alarm	Activated
Low Low Alarm	Activated

### Out of specification

Above High High Alarm	00h00m00s
Above High Alarm	07h56m00s
Below Low Alarm	08h23m00s
Below Low Low Alarm	04h50m00s

### File Information

File created	09:01:59 21/06/2013
Security #	DCC1

Index	Date	Time	°C	Index	Date	Time	°C
1	20/06/13	15:25:10	-18.5	56	20/06/13	16:20:10	-30.9
2	20/06/13	15:26:10	-18.5	57	20/06/13	16:21:10	-31.0
3	20/06/13	15:27:10	-18.5	58	20/06/13	16:22:10	-31.0
4	20/06/13	15:28:10	-18.5	59	20/06/13	16:23:10	-31.0
5	20/06/13	15:29:10	-18.7	60	20/06/13	16:24:10	-31.1
6	20/06/13	15:30:10	-19.1	61	20/06/13	16:25:10	-31.2
7	20/06/13	15:31:10	-19.6	62	20/06/13	16:26:10	-31.2
8	20/06/13	15:32:10	-20.2	63	20/06/13	16:27:10	-31.3
9	20/06/13	15:33:10	-20.9	64	20/06/13	16:28:10	-31.4
10	20/06/13	15:34:10	-21.5	65	20/06/13	16:29:10	-31.4
11	20/06/13	15:35:10	-22.1	66	20/06/13	16:30:10	-31.5
12	20/06/13	15:36:10	-22.6	67	20/06/13	16:31:10	-31.5
13	20/06/13	15:37:10	-23.2	68	20/06/13	16:32:10	-31.5
14	20/06/13	15:38:10	-23.6	69	20/06/13	16:33:10	-31.6
15	20/06/13	15:39:10	-24.1	70	20/06/13	16:34:10	-31.6
16	20/06/13	15:40:10	-24.5	71	20/06/13	16:35:10	-31.7
17	20/06/13	15:41:10	-24.9	72	20/06/13	16:36:10	-31.7
18	20/06/13	15:42:10	-25.3	73	20/06/13	16:37:10	-31.7
19	20/06/13	15:43:10	-25.6	74	20/06/13	16:38:10	-31.7
20	20/06/13	15:44:10	-25.9	75	20/06/13	16:39:10	-31.5
21	20/06/13	15:45:10	-26.1	76	20/06/13	16:40:10	-31.3
22	20/06/13	15:46:10	-26.5	77	20/06/13	16:41:10	-30.9
23	20/06/13	15:47:10	-26.7	78	20/06/13	16:42:10	-30.6
24	20/06/13	15:48:10	-27.0	79	20/06/13	16:43:10	-30.2
25	20/06/13	15:49:10	-27.2	80	20/06/13	16:44:10	-29.9
26	20/06/13	15:50:10	-27.4	81	20/06/13	16:45:10	-29.5
27	20/06/13	15:51:10	-27.6	82	20/06/13	16:46:10	-29.0
28	20/06/13	15:52:10	-27.8	83	20/06/13	16:47:10	-28.7
29	20/06/13	15:53:10	-28.0	84	20/06/13	16:48:10	-28.4
30	20/06/13	15:54:10	-28.1	85	20/06/13	16:49:10	-28.0