

FCP™

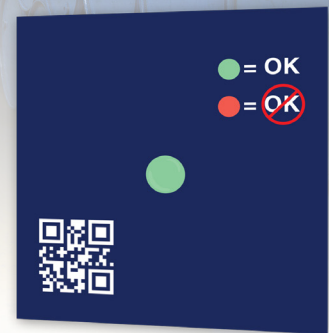
Descending Irreversible Indicators

FCP provides a clear visual indication that products have been exposed to critical falling temperatures.

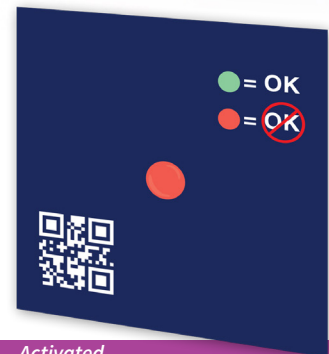
FCP clearly shows when products have been exposed to cooler temperatures with an irreversible, color change from green to red. FCP alerts all key stakeholders throughout your supply chain if a product has been exposed to a cool or freezing temperature that may compromise quality or efficacy.

HIGHLIGHTS INCLUDE:

- Accurate, irreversible color change
- Unique identification in the form of a QR code
- Color transition in less than 1°C temperature range
- Accuracy independently tested at $\pm 2^{\circ}\text{C}$ or tighter



Unactivated



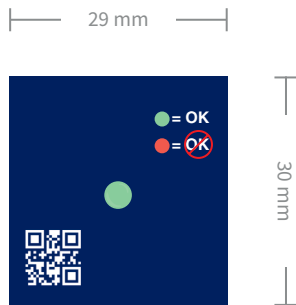
Activated



STORE YOUR TEMPERATURE DATA

When paired with ATI's free App and Cloud Service, DataNow, you will have your FCP temperature data at your fingertips 24/7. Stay connected to your temperature data throughout the supply chain to protect your products and the end user.

DIMENSIONS



ATI's customization expertise allows for specific corporate or industry branding.

SPECIFICATIONS

Temperature Capability Range	Within +15°C to -2°C
Commonly Requested Events	+15°C, +10°C, +6°C, +4°C, +2°C, 0°C, -2°C
Accuracy	± 2°C (tighter accuracies available)
Shelf Life	4 years
Size	29 mm x 30 mm (custom sizes available)
Format	Self-adhesive labels
Indicator Display	Unactivated (not triggered): green circle is clearly visible Activated (triggered): red circle, or any red in the display area Optional display: white to black color change
Color Change	Permanent
Environmental	Non-hazardous, normal disposal (no glass components)
Activation	Self-activating
Storage	Room temperature



EASE OF USE

FCP labels are easy to implement, use and maintain:

- Efficient and effective monitoring
- Designed for easy adherence to any product
- Environmentally safe with no toxic chemicals

ATI's solutions include both color-changing and electronic options to cover the product, pallet and truck-level. Rely on ATI to meet your unique temperature monitoring needs.